

9 JANUARY 2024

BRISTOL CITY COUNCIL – CIL FUNDING

DEAR SIRs,

BRISTOL JAMIA MOSQUE – DISABLED ACCESS

YOU WILL GATHER FROM THE AUDIT REPORT THAT OUR BUILDING HAS NO WHEELCHAIR ACCESS AND/OR FACILITIES WHATSOEVER SINCE 1968.

WE ARE VERY EXCITED TO BEING CONSIDERED FOR THIS VERY IMPORTANT WORK SO OUR DIVERSE COMMUNITY AND NEIGHBOURHOOD WILL BE EMPOWERED FROM THESE INSTALLATIONS THAT WILL GIVE ACCESS TO MANY MORE PEOPLE TO THE BUILDING AND WITHIN IT.

IN ROUND 1 OF THE CIL PROPOSAL FORM, WE HAD INITIALLY REQUESTED FOR £35000.00 BUT THIS WAS WITHOUT PROFESSIONAL GUIDANCE EXCEPT FOR AN AUDIT REPORT AND GUESTIMATION.

SINCE ROUND 1 OF THE CIL PROPOSAL FORM, WE HAVE APPLIED FOR DISABLED PARKING BAYS AND 2 PARKING BAYS HAVE BEEN APPROVED. THIS MEANS, MORE DISABLED ATTENDEES ARE EXPECTED AS THEY CAN PARK CLOSER TO THE BUILDING. 1 PARKING BAY WILL BE ON THE LOWER FLOOR ENTRANCE AND THE OTHER IS ON THE MAIN GREEN STREET ENTRANCE. **THE PARKING BAYS ARE EXPECTED TO ALLOW MORE WHEELCHAIR USERS TO ATTEND THE BUILDING, THE WHEELCHAIR USERS WILL ALSO EXPECT THE BUILDING TO BE WHEELCHAIR ACCESSIBLE AND FRIENDLY.**

HOWEVER, **ON THIS OCCASION**, WE HAVE HAD THE OPPORTUNITY TO MEET WITH SPECIALISTS AND DISCUSSED WITH PROFESSIONAL INSTALLERS AND CONTRACTORS. WE HAVE REALISED THE FULL COST TO HAVE ALL INSTALLATIONS, THE ASSOCIATED RENOVATIONS AND STRUCTURAL CHANGES, ALL THIS WILL RAISE THE REQUIRED AMOUNT TO £75,000.00. WE ARE A LARGE BUILDING WITH 4 MAIN HALLS, KITCHEN, WARM SPACE, TOILETS AND A MORTUARY.

IF WE WERE TO GET THE WHOLE REQUIRED CHANGES DONE TOGETHER, THEN IT WILL BE CHEAPER IN AN OVERALL MANAGEMENT OF THIS EXPERIENCE. IF WE DONE THE WORKS IN SEPARATE TIMINGS, IT WILL ADD COSTS TO DECORATION AND FIXTURES SEVERAL TIMES.

WE UNDERSTAND THAT OUR LOCAL COUNCILLOR LISA STONE HAS ALSO APPROACHED THE GRANT COMMISSIONERS TO REQUEST FOR THE UPLIFT. LISA HAS BEEN VERY SUPPORTIVE AND INSTRUMENTAL IN OUR CONFIDENCE FOR THE CIL GRANT AND IN OUR CONSIDERATION FOR MAKING THIS HUGE CHANGE FOR OUR DIVERSE COMMUNITY AND BUILDING USERS OF ALL COMMUNITIES.

THE COVERED WHEELCHAIR RAMP WILL ALLOW A SAFE AND COVERED SPACE FROM PAVEMENT LEVEL INTO THE MAIN HALL. THE LIFT WILL ALLOW USERS TO GO DOWNSTAIRS TO THE TOILET ROOMS. INTERNAL STEP RAMPS WILL ALLOW EASY MOVEMENT FROM THE DIFFERENT LEVELLED FLOORING ESPECIALLY INTO THE WASHROOMS. EXTERNAL STAIRLIFT

WILL ALLOW ACCESS FROM THE OUTSIDE STAIRS TO THE DOWNSTAIRS INTO THE KITCHEN AND WARM SPACE AREA. WITHOUT ALL OF THIS, WE WILL HAVE TO COMPROMISE AND PRIORITISE.

WE ARE ABLE TO GET THE LIFT INSTALLED AS FROM MARCH 2024.

WE ARE ABLE TO GET THE STAIRLIFTS INSTALLED AS FROM MARCH 2024.


WE ARE ABLE TO GET RAMPS INSTALLED AS FROM MARCH 2024.

WE ARE ABLE TO GET THE COVERED ENLARGED WHEELCHAIR RAMP BUILT FROM MARCH 2024.

ONCE THESE ITEMS ARE BEING INSTALLED, THERE WILL BE ALL THE COSMETICS OF THE INSTALLATIONS WITH ELECTRICAL AND FINISHING.

PLEASE CONTACT US FOR ANY FURTHER INFORMATION OF URTHUR DISCUSSION.

YOURS FAITHFULLY,

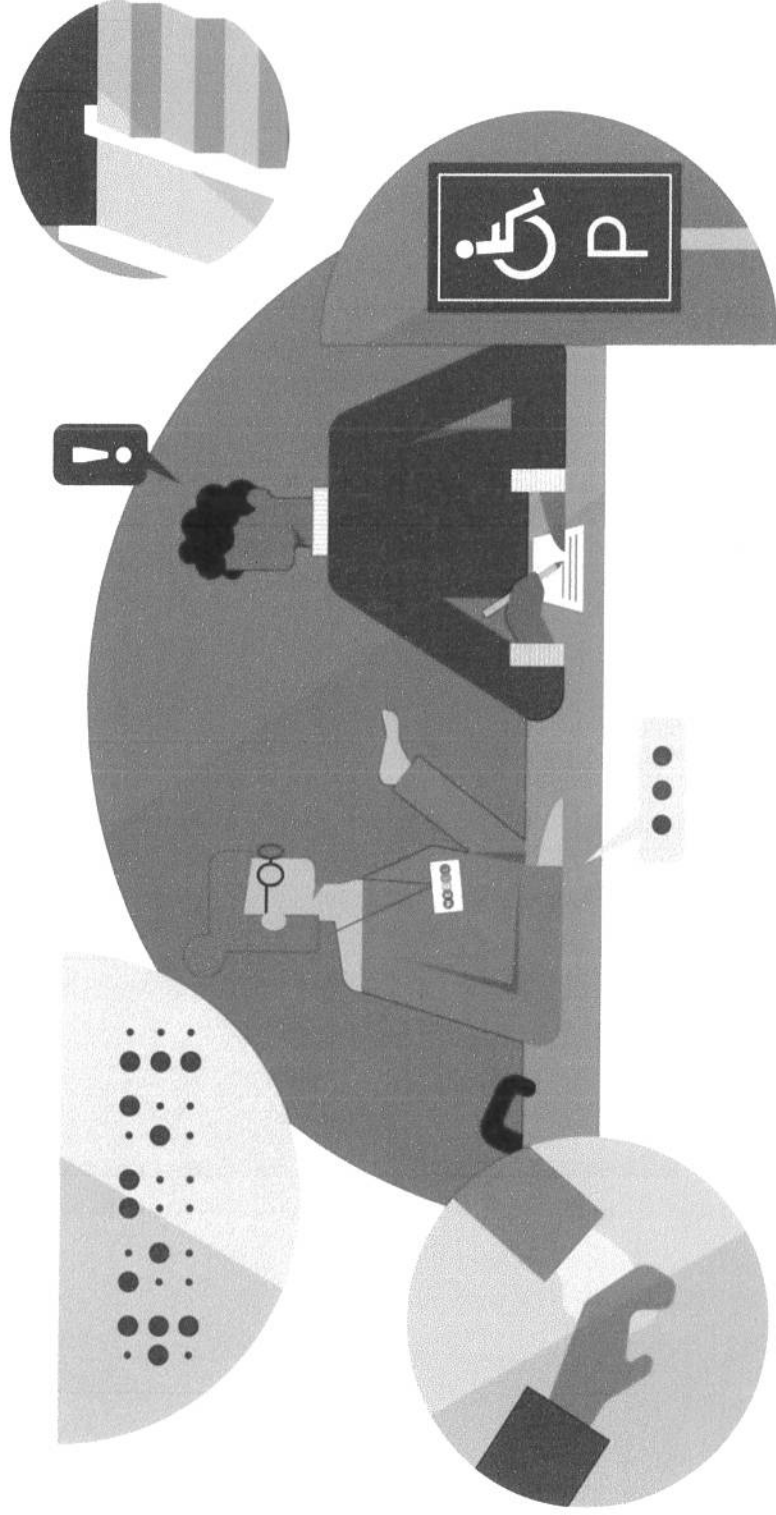

ZAHEER SHABIR

TRUSTEE, BRISTOL JAMIA MOSQUE



Disability.Inc. Access Audit Report

Bristol Jamia Mosque



Date: 20th April 2023

CONTENTS

Main Summary & Definition of Disability	Page 3
Principles of the Access Audit	Page 3
Audit Introduction	Page 4
Summary of Findings and Recommendations	Page 6 - 10
Appendix	Page 11 - 16

Main Summary

Disability Inclusion

As an organisation, you should be wholly committed to the principles and aims of the Equality Act 2010 and to its implications for your staff and service users. In accordance with your equality obligations, you have the responsibility not to treat disabled customers less favourably than their non-disabled peers, and to comply with your duty to provide an inclusive environment, making it accessible for all. The aim is to ensure that these principles apply in all aspects of your business/organisation and seek to ensure that these principles are applied whenever relevant individual decisions must be made regarding accessibility.

Social Model of Disability

The social model of disability is a way of viewing the world, developed by Disabled people.

The model says that people are disabled by barriers in society, not by their impairment or difference. Barriers can be physical, like buildings not having accessible toilets. Or they can be caused by people's attitudes towards difference, like assuming Disabled people cannot do certain things.

The social model helps us recognise barriers that make life harder for Disabled people. Removing these barriers creates equality and offers Disabled people more independence, choice, and control.

Principles of the Audit

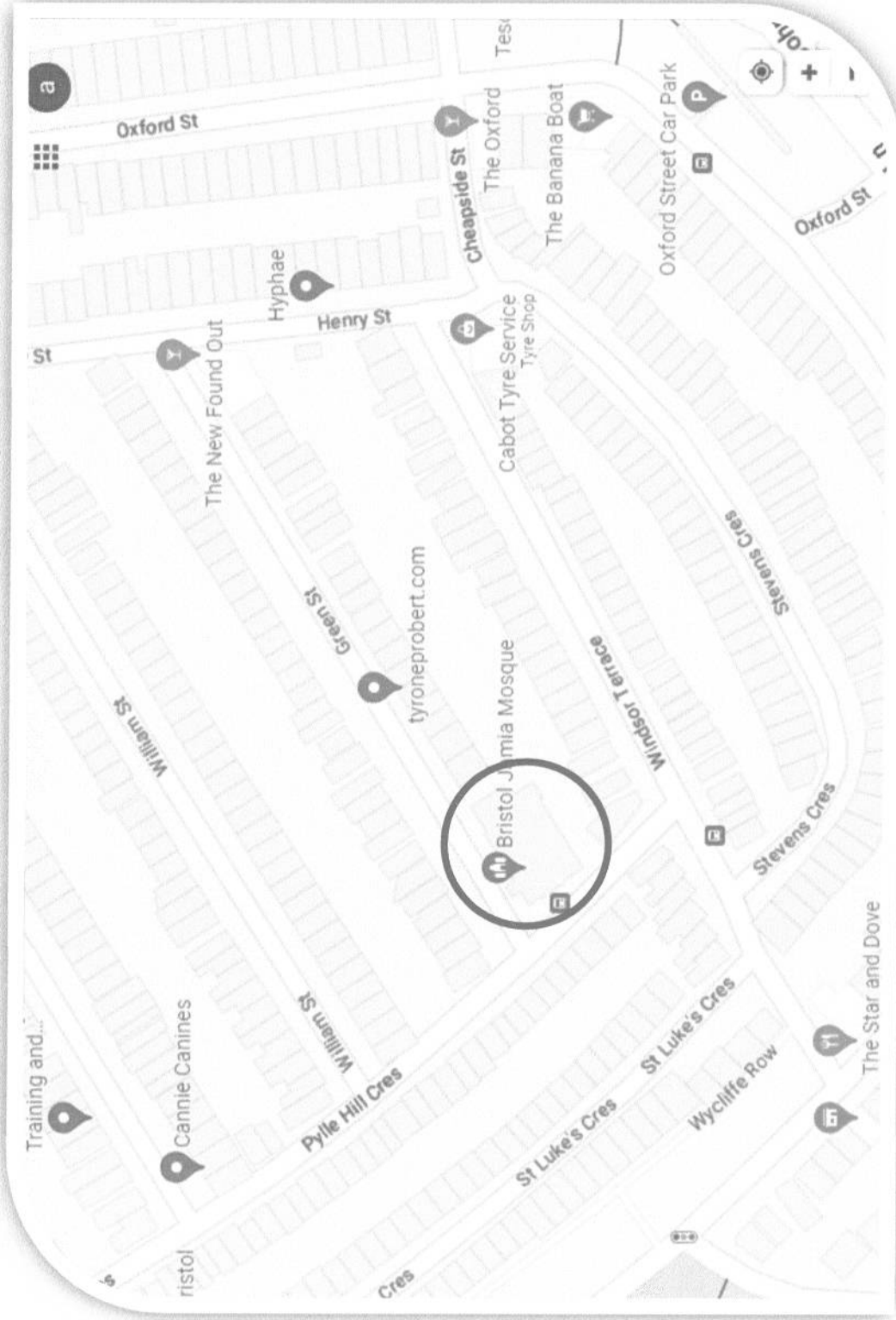
The Access Audit has been undertaken to appraise proposed plans and designs and propose the extent of works required to improve the proposed designs in accordance with the definitions of the Equalities Act 2010. The audit considers the needs of people with mobility impairments (including wheelchair users) and sensory impairments. The audit will identify physical barriers to access. This audit should be treated as the starting point of an ongoing access plan, which should be regularly reviewed by the organisation. Changes made after the audit may improve or reduce levels of accessibility.

It is important to stress that West of England Centre for Inclusive Living (WECIL) does not claim to be surveyors or official assessors. WECIL are a Disabled Peoples User Led Organisation that has several members with a variety of impairments that can relate to the access issues Disabled people face daily. All WECIL's access audit specifications come from the official HM Government Approved Document on Access to Buildings and Use, using M1/M2 specifications.

Audit Introduction

An audit was carried out on 20th April to support Jamia Mosque Community Resilience funding application. The audit focused on the external entrances to the mosque and how to improve accessibility to the upstairs areas as there are currently no lifts or internal ramps. Conducting the audit on behalf of WECIL was Business Support Service Manager, Kinny Chinangwa, Disability.Inc Consultant, Anthony Hearn and WECIL's Access and Inclusion Team members Ellie Fletcher and Phil Gingell. Supporting us on the day was Zaheer Ahabir from Bristol Jamia Mosque.

Location of Jamia Mosque



Summary of Findings and recommendations

The access audit focused on three key external entrances into Bristol Jamia Mosque and ideas around where to implement a platform lift to enable attendees to access different areas of the mosque. The mosque is situated in a part of Totterdown which is on a hill and carries gradient issues.

The main entrance leading to the prayer hall on Green Street is a stepped entrance via two steps that has yellow colour contrasted nosing strips and a metal handrail on either side. The signage for the main prayer hall is at least 8 feet high using dark green font on a white background which is a good colour contrast. Currently there isn't ramped access for wheelchair users into the main prayer hall. We were told that families of wheelchair users lift their wheelchairs into the double door entrance which isn't ideal. Once inside the prayer hall there is an opportunity for wheelchair users to access it via the implementation of a platform lift that can be accessed via the entrance on Pylle Hill Crescent.



Image of the main entrance to the main prayer hall.



Image of WAIT members looking at the main entrance.



Image of the stepped access to the main prayer hall.

The second entrance to the mosque is on Pylle Hill Crescent halfway up a steep gradient. This entrance has two slight lips, one as you enter the first gate which measures 900mm and the second on the entrance into the lower entrance. This can be corrected by levelling out the stonework at the gate and adding in a metal ramp cover in the door threshold into the lower area.



Image of the 2nd entrance gate on Pylle Hill Crescent.

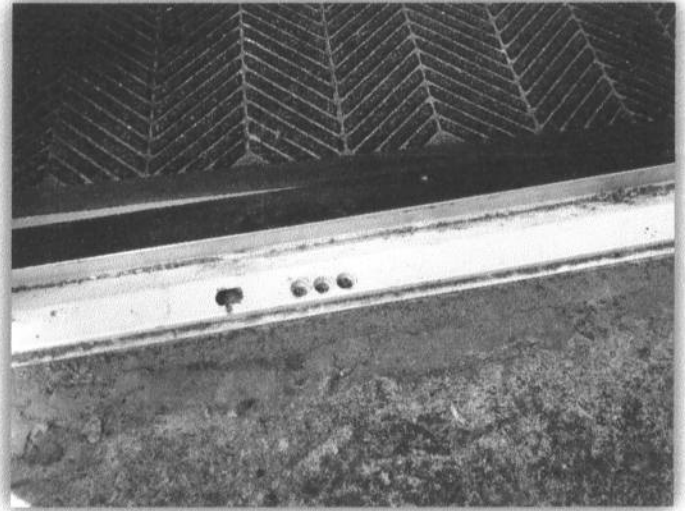


Image of the lip in the door threshold of the 2nd entrance.

In the lower ground area, you have access directly to another prayer hall and access to an accessible toilet. As you enter from the lower entrance to the left is a flight of stairs to access the main prayer hall above. Towards the right of the stairwell is a space which could be used to implement a platform lift that would take you to the hall above. A deluxe open platform lift that can travel up to 3m would be sufficient in a minimum space of 1200mm x 1400mm. The current barrier to this would be the double doors from the 2nd prayer hall which open out into a corridor and encroaches into the platform lift space. We would recommend implementing sliding doors instead.

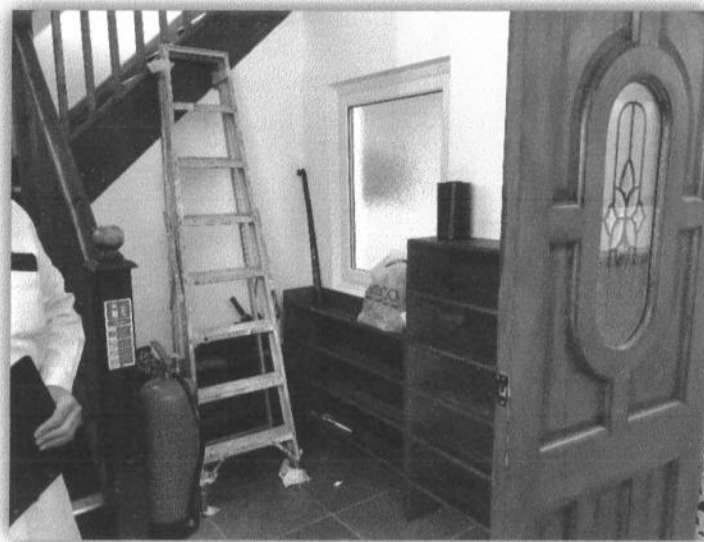


Image of potential space for a platform lift.

The lower ground has the only accessible toilet in the building but there is an access flaw with a large step in the door threshold leading to the accessible toilet and the washroom. The recommendation would be to create a gradual descent using a ramp just before the door threshold as there is quite a short distance from the door to the accessible toilet.



Image of the lead up to the accessible toilet which needs a gradual descent.



Image of the step down to the accessible toilet.



Image of the step down to the accessible toilet.



Image of the accessible toilet.

The third entrance is situated slightly further up Green Street. This entrance has stepped access down into the far right side of the main prayer hall along with the women's toilet and washroom areas. There is also further stepped access another level to the lower right side of the building where the kitchen and eating area is. After surveying the area, we noticed that there is a fire exit at each of the different levels which would allow direct access using a platform lift that takes you directly in front of these access doors. The fire exit next to the main prayer hall has a single leaf door that measures 700mm wide which doesn't meet the standard. This will need widening and the stepped access levelled out at both levels.



Image of the 3rd entrance into the right side of the mosque.



Image of the area for a potential platform lift.



Image of the area for a potential platform lift.



Image of the eating area on the lower level and the door leading to the potential platform lift.

Recommendations

- Level out the entrance to the 2nd entrance on Pylle Hill Crescent.
- Install a metal ramp cover over the slight lip in the door threshold into the 2nd entrance.
- Install sliding doors into the lower prayer hall.
- Installing a platform lift on the lower level next to the stairwell that will come out into the main prayer hall. Use platformliftco.co.uk to look at quotes for open platform lifts.
- Create a gradual descent in the lower area leading to the accessible toilet.
- Remove the cabinet next to the accessible toilet door to create a wider door opening for wheelchair users.

- Implement a platform lift to the right of the 3rd entrance on Green Street that will lead down to the main prayer hall fire exit and the door in the eating area.
- The fire exit door in the main prayer hall needs to be extended by 200mm to meet the access needs for the platform lift.
- Level out the door threshold to the eating area on the lower level of the building. A portable ramp could also be a temporary solution.
- Add a colour to the door frames of any white door next to white walls as this will help with the colour contrast and become better visually for people with a visual impairment.

Appendix 1 Internal and external stepped access

Diagram 4 Stepped access – key dimensions and use of hazard warning surface

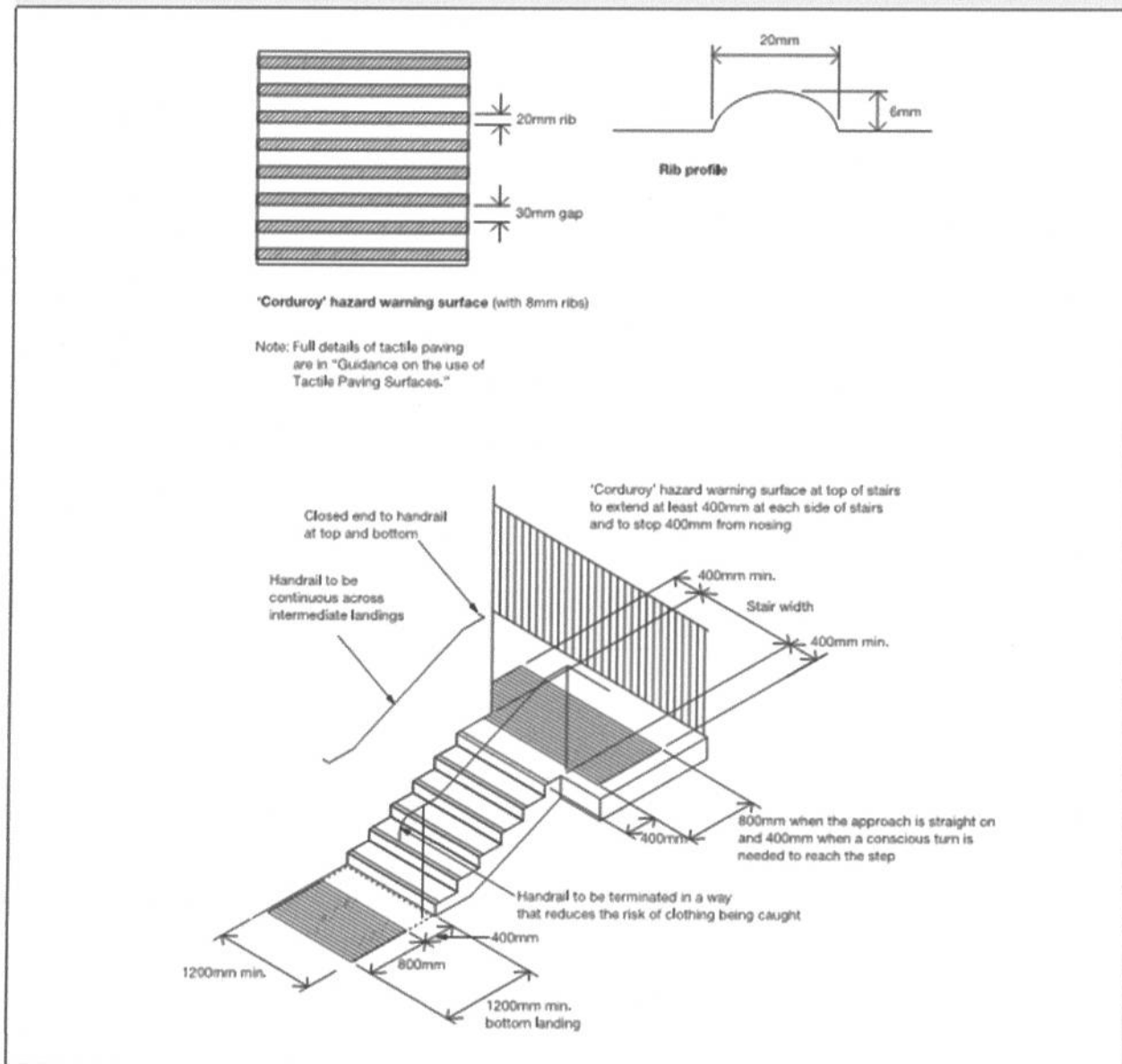
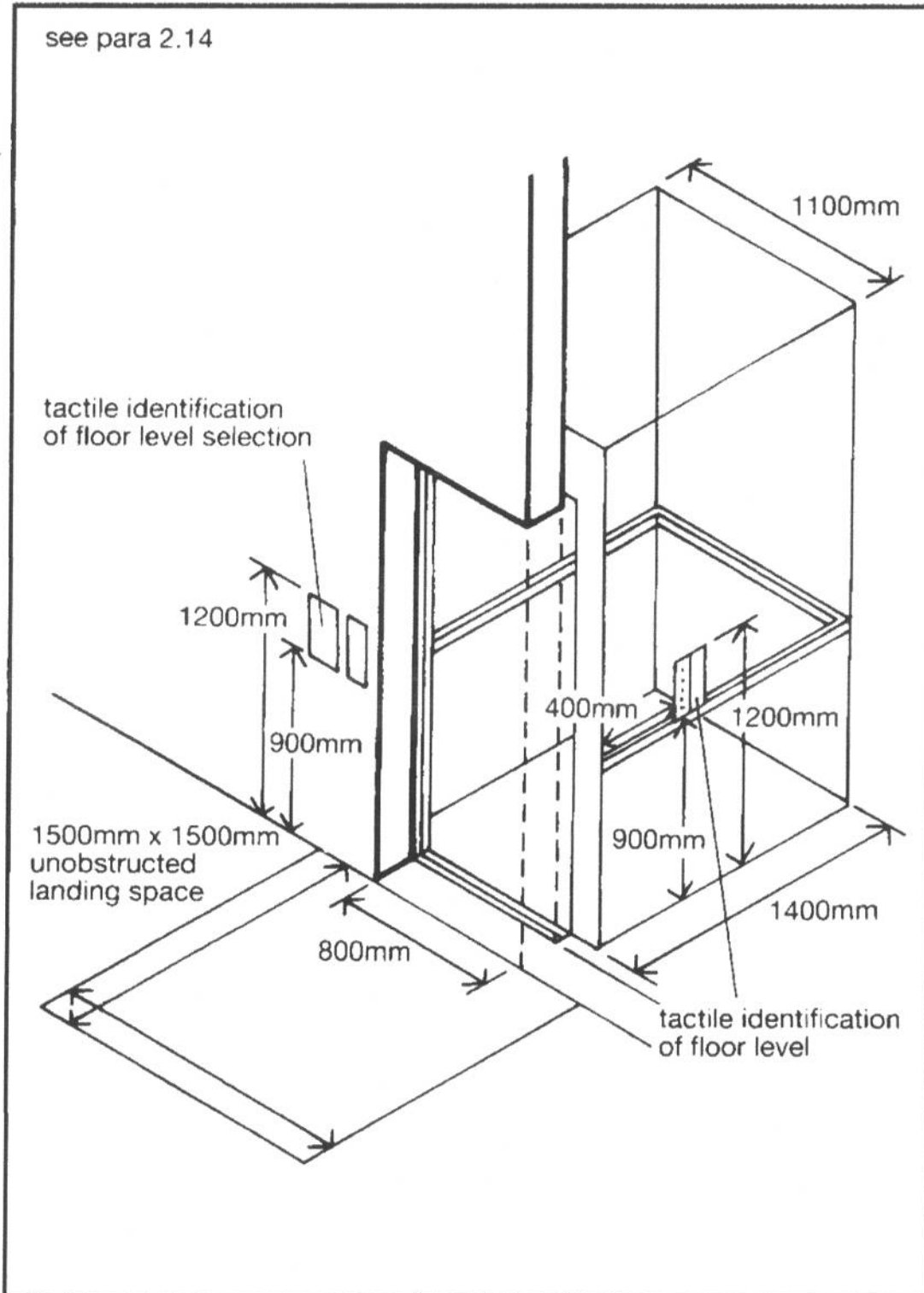
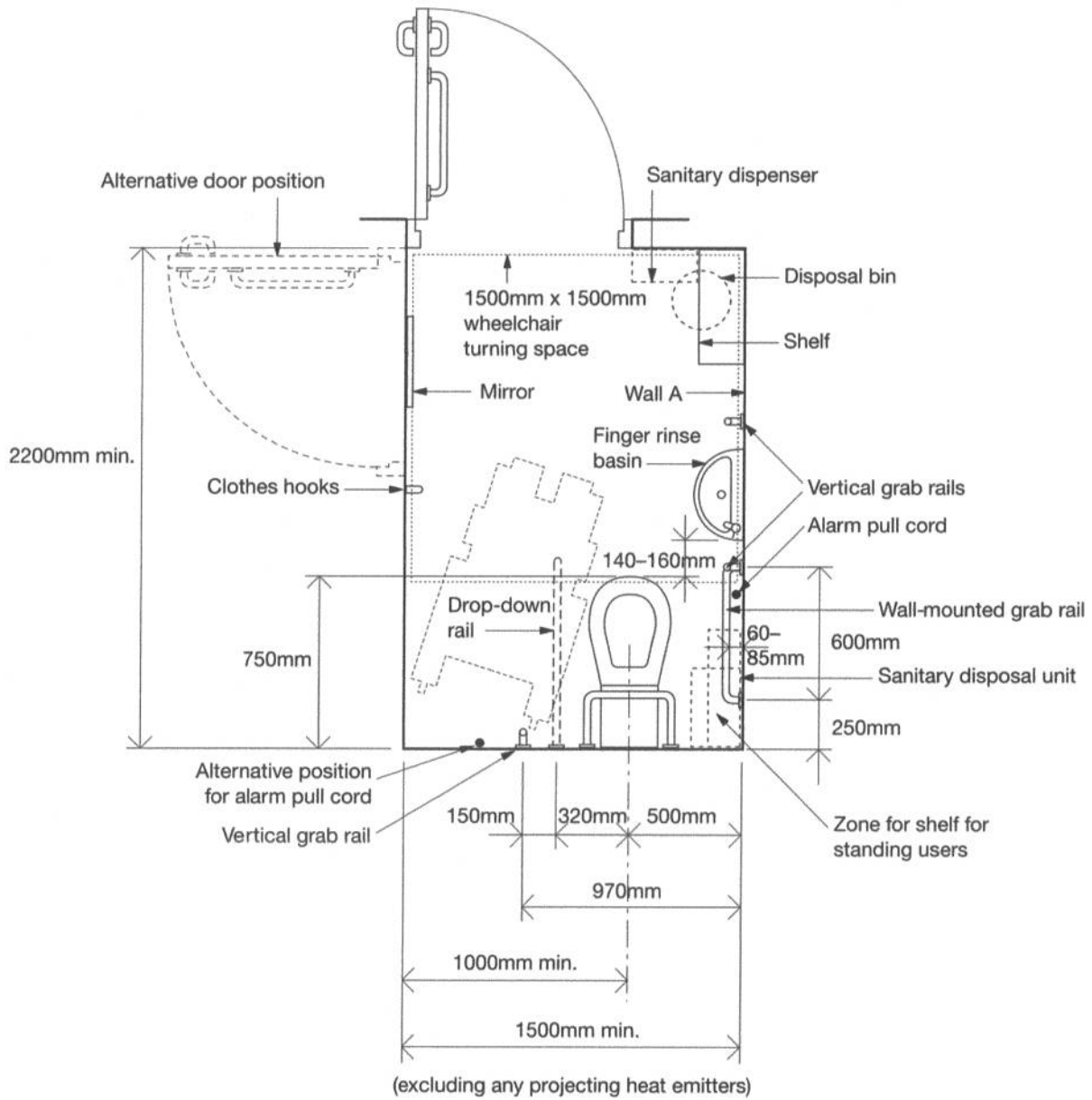


Diagram 11 Lift dimensions

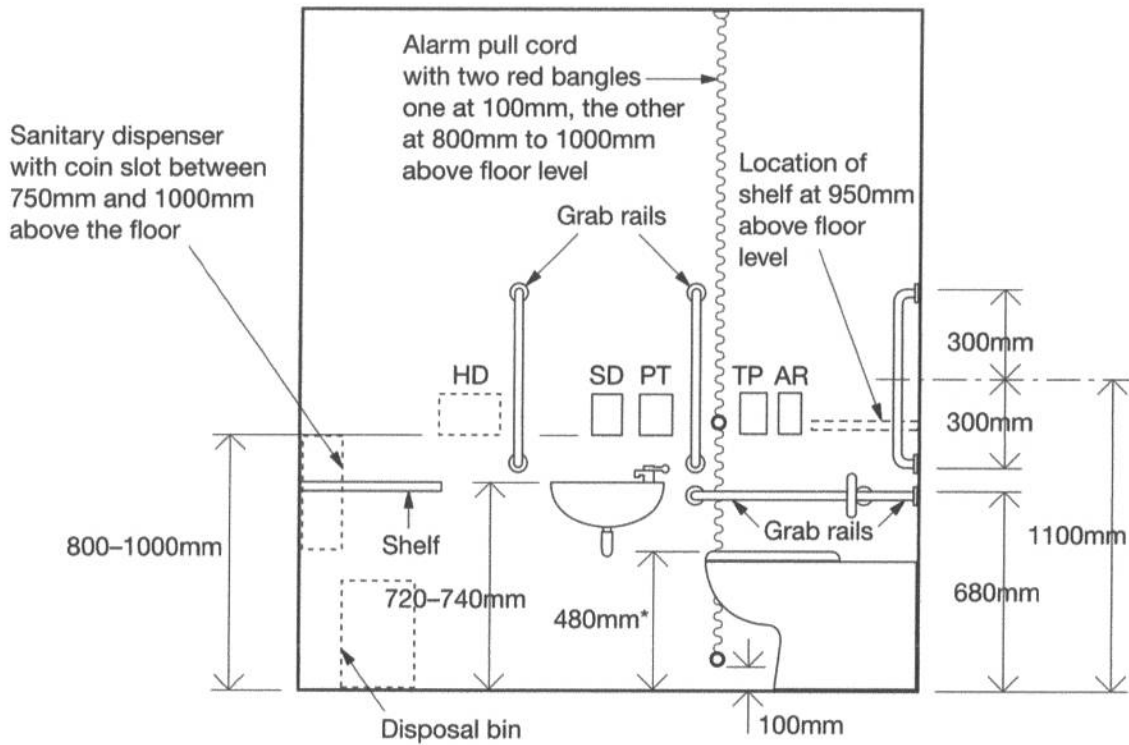
see para 2.14



Appendix 3 Accessible toilet dimensions



Note
Layout for right-hand transfer to WC



*Height subject to manufacturing tolerance of WC pan

HD: Possible position for automatic hand dryer (see also Diagram 20)

SD: Soap dispenser

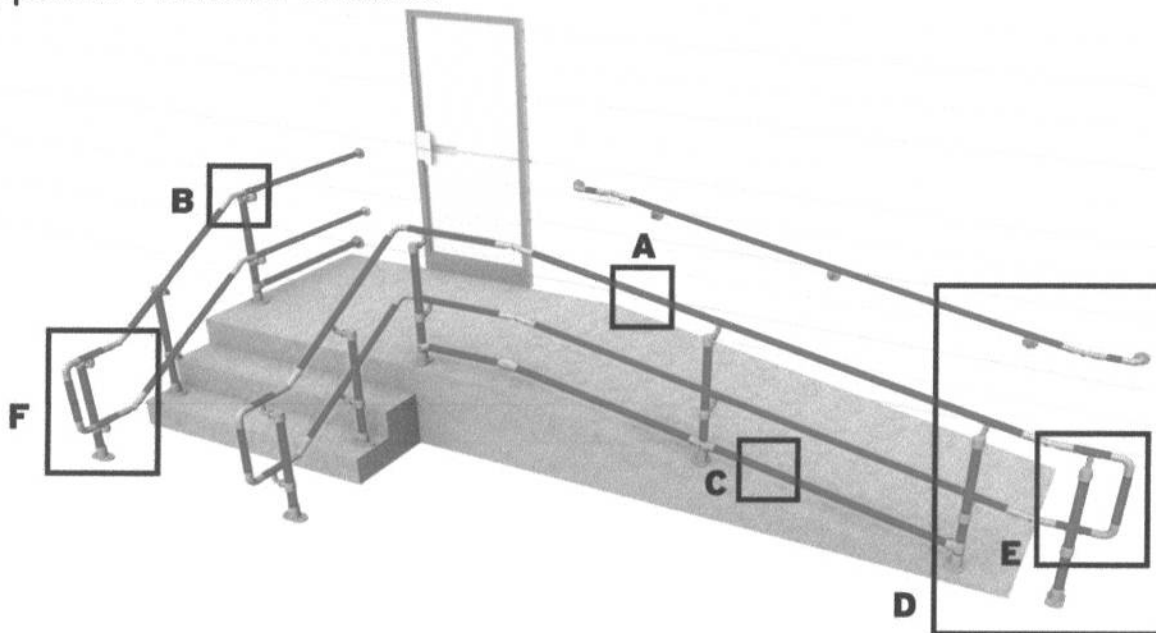
PT: Paper towel dispenser

AR: Alarm reset button

TP: Toilet paper dispenser

Height of drop-down rails to be the same as the other horizontal grab rails

Appendix 4 Handrail Guidance



A) Handrail: Handrail must be a continuous smooth surface. A handrail must be on both sides of ramp or stairs.

B) Handrail height: Handrail must be 900mm - 1.1m in height.

C) Edge protection: When there is a drop off, ramps require a curb or curb rail to prevent wheelchairs from slipping out from under the handrail. In some cases, a mid-rail is sufficient to provide this protection.

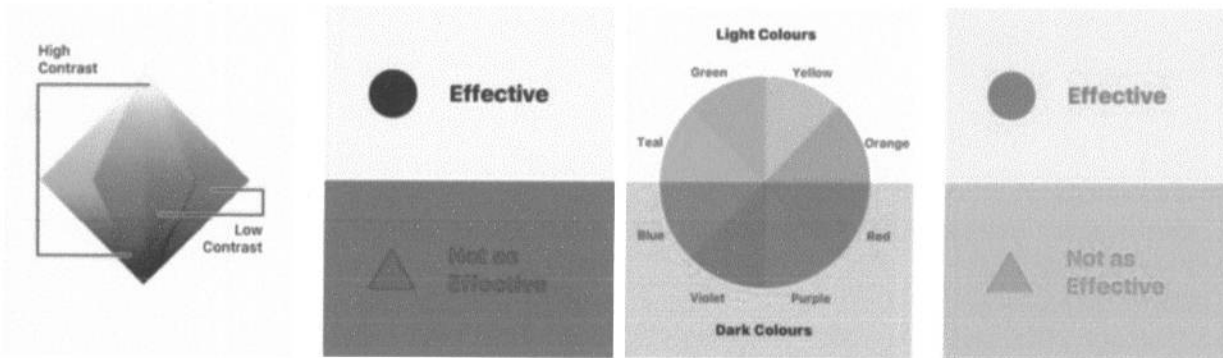
D) Clearance: A ramp must have a minimum clear width of 500mm.

E) D Returns: Railing ends need to be rounded or return smoothly into a floor, wall, or post.

F) Extensions - stairs: The Handrail should extend the width of one stair tread and then level out for 300mm. Ramps: The Handrail should extend parallel to walking surface 300mm; past the top and bottom of the ramp.

Appendix 5 Colour Contrast

Colour contrast comes up a lot when looking at different areas of an organisation from information and public spaces to marketing and digital platforms. The best colour contrast is a white background with dark colours. Yellow and black also works well. Below is a colour contrast chart that shows the difference between good and bad contrast:



3rd January 2023

Zaheer
Bristol Jamia Mosque
Green Street, Totterdown
Bristol, BS3 4UB

Quotation No – Jan-19527-JB-JB

Dear Zaheer

Reference - Bristol Jamia Mosque - Lift 1

Fixed base price £19,368 + VAT includes:

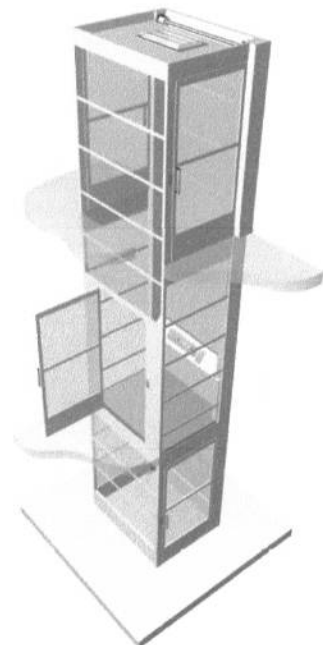
- PLC Project Management Service – use The Platform Lift Company for your lift solution
- Technical Site Advice/Site Visits – saving you time and potential delays
- Pre-Installation Site Survey – with The Platform Lift Company Surveyor
- 12 Months Warranty
- Servicing in the first year – two service visits from The Platform Lift Company’s employed specialists.

The Platform Lift Company offer a wide range of products and market experience to cover all applications and environments. We appreciate that each clients’ requirements will vary so we provide dedicated resource to manage each individual project from start to finish.

We trust you will find this quotation to be of interest and look forward to discussing our offer in more detail. Should you require any further information in the meantime please do not hesitate to contact us.

Yours Sincerely,

Jason Bartlett
Area Sales Manager
Mobile: 07384253893
Jason@platformliftco.co.uk



Jan-19527-JB-JB

The Platform Lift Company's comprehensive offer includes:

Delivery, off-loading, installation and commissioning of the platform lift to the following specification:

1 x PLC C2000 Platform Lift	£ 19,864
2.5% Discount	£ 496
Total fixed base price	£ 19,368

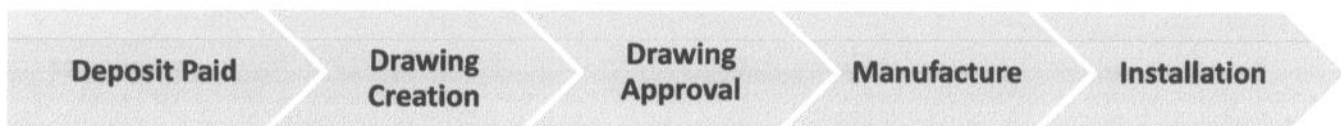
All prices are Nett and subject to VAT. Quotation valid for 30 days. (E&OE)

Included Specification:

- 1 Fault Information Display on COP
- 2 Constant pressure platform controls, one touch landing calls
- 3 LED Shaft Roof lighting with additional 3hr emergency platform lighting
- 4 Handset providing two-way voice communications
- 5 Emergency battery lowering self-release system – User operated
- 6 Fire alarm auto-homing



Please note the above example has a non-standard RAL colour and glazed panels, both are optional extras.



From: Access Able | Bob <bob@access-able.co.uk>

Date: 3 January 2024 at 16:17:35 GMT

To: bahmed173@yahoo.com

Subject: lifts for Bristol Jamia Mosque

For the attention of Mr Bashir Ahmed

Good afternoon Bashir,

A Happy New year to you and sorry for the delay in getting this quotation to you.

I was aware that our supplier Handicare were increasing their prices from the beginning of January, and I have only just been informed that this increase is 8%. My quotation obviously includes for this increase.

As discussed, you will be providing the power supplies for all of the lifts, and I am happy to liaise with your electrician beforehand to ensure that this element runs smoothly.

As the lift will be for general use by any person who may have the need of them VAT will have to be charged (If the lift was for a specific person it would be exempt)

We are considering 3no. Lifts :

1. **External straight lift to give access from pavement to secondary doors**

- This lift will be a standard Handicare 1000 Straight outdoor lift as page 16 of the brochure that I let with you and as shown in attachment 1.

It has a maximum user weight limit of 21 ½ stone (137kg). It has a manual swivel seat and a manual footplate lift.

The handrails can remain in place as can the gates at the top, on the boundary.

Our best price to supply and install this lift would be £3850 + £770 VAT = £4620 Total.

To upgrade to 25 stone (160kg) lift would add £600 + £120 VAT = £720 total, or to upgrade to 31 ½ stone (200kg) lift would add £900 + £180 VAT = £1080 total.

2. **External curved lift to give access from ground level to basement level**

- **(OPTION A)** – This lift will be a standard Handicare 4000 Curved outdoor lift with a manual swivel seat and a manual footplate lift as shown in attachment 2.

It has a maximum user weight of 21 ½ stone (160kg) The lift will come to rest by the gate post (gate can remain)

Our best price to supply and install this lift would be £7970 + £1594 VAT = £9564 Total

To upgrade to a 25 stone (160kg) lift would add £750 + £150 VAT = £900 Total

3. **External Straight lift to give access from ground level to basement level**

- **(OPTION B)** – For nominal builders work alterations to the straight flight it would yield significant savings on the type of lift we could install for you. We could alter the top 2 steps to effectively increase the length of the main flight by 2 steps and create a larger landing area inside the gate. We would tile those steps with similar tiles (best match possible) and refix existing metal nosings.

We could then fit a straight lift to this flight. This lift will be a standard Handicare 1000 Straight outdoor lift as page 16 of the brochure that I let with you and as shown in attachment 1.

It has a maximum user weight limit of 21 ½ stone (137kg). It has a manual swivel seat and a manual footplate lift.

Our best price to supply and install this lift would be £5730 + £1146 VAT = £6876 Total. and includes the builders work as described which represents an overall saving of £2688

To upgrade to 25 stone (160kg) lift would add £600 + £120 VAT = £720 total, or to upgrade to 31 ½ stone (200kg) lift would add £900 + £180 VAT = £1080 total.

4. **Internal curved lift to give access from main hall to basement lobby**

– this lift will be a standard Handicare 4000 internal lift fitted to the left-hand side of the staircase when looking from the bottom upwards. It has a manual swivel seat and a manual footplate lift.

It has a maximum user weight of 21 ½ stone (160kg). It will have an additional charging point at the mid landing level so that the chair can be left at either the top, middle or bottom of the track to enable it to charge. our best price to supply and install this lift will be £7220 + £1444 VAT = £8664 total

From full survey to fit currently takes around 3 – 4 weeks. The bespoke lifts are made to order as soon as the survey is submitted so a non-returnable deposit of 35% is required upon survey so that the order can be placed on your behalf. The balance of payment is due and payable upon installation.

Not only do we sell stairlifts but we also service and repair them.

We can offer a service contract on the quoted lifts at £240 + VAT/ year per lift. This includes all labour, all call outs, all parts and consumables and an annual service (Annual service with no contract £120 + VAT). The only costs that you will be charged for would be for customer mis-use or malicious damage/vandalism.

You may remember we discussed manual wheelchairs which may enable wheelchair users to leave their own chair at the top of the staircase and transfer into a supplied manual wheelchair at the lower basement level. There are a huge range of these available. I would suggest a 20" wide self-propelling chair that can be folded flat when not needed. This type of chair starts at £385 + £77 VAT =£462 Total for a robust steel chair raising to around £550 + £110 VAT = £660 total for a lighter aluminium chair. I am happy to bring samples down to show you or alternatively please call into the shop to see our range

You may also remember that I fell down a step between the two basement halls when I visited. I appreciate that I should have been more observant but, to avoid this happening to anyone else you might want to consider a ramp to overcome the difference in floor levels between these rooms. I can offer two options :

1. **Temporary portable ramp** – 5' suitcase ramp weighing 13.2kg, which can be lifted and stored when not needed and would cost £240 + £48 VAT = £288 Total
2. **Permanent ramp.** – 6 ' Ramp designed to be fixed in place with a handrail on both sides. Cost including installation would be £490 + £98 = £588

Stairlift prices will remain fixed for 6 months, wheelchair and ramp prices I can hold firm for 3 months. Works can be carried out in isolation or collectively to suit your needs

If you have any queries or I can be of any further assistance, please call me at any time.

Regards

Bob Sansom

Bob Sansom

Access Able Limited
72 St Johns Lane
Bedminster
Bristol
BS3 5AF

Tel – 0117 980 1820

Email – bob@access-able.co.uk

Website – www.access-able.co.uk

Facebook – www.facebook.com/AccessAbleBristol/

Fwd: QUOTE, 171 WELLS ROAD, MOSQUE

Bashir Ahmed <bahmed173@yahoo.com>

Thu 04/01/2024 15:52

To:Zaheer Shabir <hmzs.pab@hotmail.com>

Sent from my iPhone

Begin forwarded message:

From: Lee Lewis <bs3roofing@gmail.com>

Date: 4 January 2024 at 14:14:14 GMT

To: bahmed173@yahoo.com, Warren Kuti <warren@bs3roofing.co.uk>

Subject: QUOTE, 171 WELLS ROAD, MOSQUE



BS3 ROOFING **BS3 BUILDING**
THE COMPLETE ROOFING COMPANY **& CARPENTRY**

ALL BUILDING, ROOFING AND CARPENTRY UNDERTAKEN

- ROOFING WORKS
- LOFT CONVERSIONS
- HOUSE EXTENSIONS
- CARPENTRY
- PLASTERING

07922804129 / 07557361610
HEAD OFFICE: 0117 373 2092
WWW.BS3ROOFING.CO.UK INFO@BS3ROOFING.CO.UK

To: BASHIR AHMED

Project: TOTTERDOWN MOSQUE

Works to be carried out:

1. BS3 to supply scaffolding
2. Extension to be built as per drawings
3. Block work
4. Rendering
5. Timber stud work
6. Plasterboarding
7. Plastering
8. Electrics
9. Painting
10. 2 x lifts openings to be installed as per drawings
11. Timber frame
12. Timber m12 bolts
13. All works carried out by trained and competent workers
14. All materials to be supplied and installed by BS3
15. All waste to be removed from site by BS3
16. 25% deposit would be required to secure date, and materials
- 17.

-
-
-
-
-
-

TOTAL FOR EXTENSION WORKS : £42,520 + VAT
TOTAL FOR LIFT OPENINGS: £2200 + VAT (EACH) (X2)

- **Please find our costs above, BS3 would require a 25% deposit upfront to secure date and materials. Please let me know if you would like to go ahead, we will raise a deposit invoice, once settled this will guarantee you the proposed start date and a purchase order number for materials.**
- **Hope this helps, any questions from you guys please give me a call.**

-
-

Kind regards,

Lee Lewis

07922804129

Managing Director

BS3 ROOFING LIMITED/BS3 BUILD & CARPENTRY

Unit 2 St Stephens Business Centre

Bristol

BS30 5JD

www.bs3roofing.co.uk

lee@bs3rooing.co.uk

from Hurairah Masood sole trader

To Bashir Ahmed

project work> totterdown mosque extension and rip outs

the quote includes the following

EXTENSION WORK

scaffolding - block work - render finish - extension built to drawing - opening to be made to open to new extension - plasterboarding - plastering - electrics - doors - skirting - architrave - painting

RIP OUTS FOR ELEVATOR

timber frame to be constructed to plans - removal of old floor and carpet

all work to be carried out by trained and qualified workers all materials and components need for both extension and rip out to be supplied by me, all waste to be removed from site

--TOTAL--

EXTENTION £39,500 + VAT

BOTH RIP OUTS £1,850 + VAT